

# SOUTHWAY HSA NEWSLETTER

June 2015

Issue 4



## Contents

- Diary Dates
- Sensory Garden Funding
- House Charity Event
- Easyfundraising
- Discos/Leavers' Party
- Summer Fayre

## Diary Dates

### Ice Lolly Sale

Every Friday after school  
from Friday, 12<sup>th</sup> June  
outside Zone

### Cake Donations for Summer Fayre

Friday, 26<sup>th</sup> June

### Summer Fayre

Saturday, 27<sup>th</sup> June 2015  
2.00 pm - 5.00 pm

### Disco - Years 3 / 4 / 5

Friday, 3<sup>rd</sup> July 2015  
@ 6.00 pm - 7.00 pm

### Year 6 - Leavers' Party

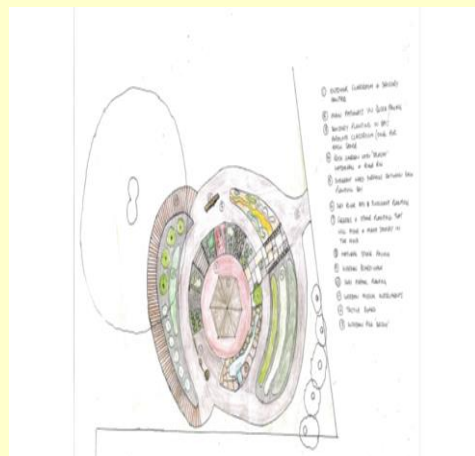
Friday, 10<sup>th</sup> July 2015  
@ 6.00 pm - 8.00 pm

## Sensory Garden Funding

We have the opportunity to win funding for our sensory garden project and all we need you to do is vote at the OneFamily website. It will only take 5 minutes.

[www.foundation.onefamily.com/  
communityaward/](http://www.foundation.onefamily.com/communityaward/)  
and search for Southway.

There are only 4 grants up for grabs, so please vote now and ensure we are one of the lucky projects!



## House Charity Event

A big thank you to all the children in Hill for raising £335.50 for the HSA!

## Summer Fayre - Saturday, 27<sup>th</sup> June - 2 pm

The annual summer fayre is nearly upon us and this year's event will be opened by Ricky Reeves, Rugby Player from London Welsh. Ricky will also be refereeing tug'o war competitions throughout the afternoon. We will have live music from - Eclectic, The Undercovers and of course the staff band! There will be an obstacle course for children, facilitated by Premier Sports, plus lots of other fun games and activities. School clubs will put on displays, compered by Mid Downs Radio. Refreshments will include BBQ, Drinks Tent (beer & Pimms), tea & cakes and of course ice cream! We will also hold our annual summer fayre raffle - 1<sup>st</sup> prize £150 of Argos vouchers donated by PSP Homes, plus lots more fantastic prizes (tickets will be sent home soon!). We will also have a silent auction - so watch this space for some truly fabulous treats to be had! Please come along and support the fayre and if you can help in any way, please contact the HSA (email [hsa@southwayjunior.co.uk](mailto:hsa@southwayjunior.co.uk)). We look forward to seeing you!!

Chair : Shuna China

Vice Chair: Michelle McDougall

Treasurer : Teresa Langley

Secretary : Louise Corbett

Email : [hsa@southwayjunior.co.uk](mailto:hsa@southwayjunior.co.uk)

## Bag2School Scheme

Thank you to everyone who donated a bag (or 2!) for the Bag2School Scheme. We raised £153.60. Our next collection will be in October.

## Easyfundraising

Thank you to those of you who have been using Easyfundraising whilst shopping on line. In the last quarter £27.91 was raised purely by clicking through the Easyfundraising website before making a purchase.

If you haven't yet registered, all you need to do is visit

[www.easyfundraising.org.uk/southwayhsa](http://www.easyfundraising.org.uk/southwayhsa)

and follow the instructions to register. Then every time you shop, access the on-line stores via easyfundraising.

## Disco / Leavers' Party

Letters will be sent home on 12<sup>th</sup> June for the Year 3/4/5 disco. Please ensure that slips and money are returned by the deadline - we need to ensure we comply with the correct child:adult supervision ratio and the fire regulations for the use of the hall.

Letters for the leavers' party will be sent home on 26<sup>th</sup> June and again ensure ticket requests are received by the deadline to guarantee your place!